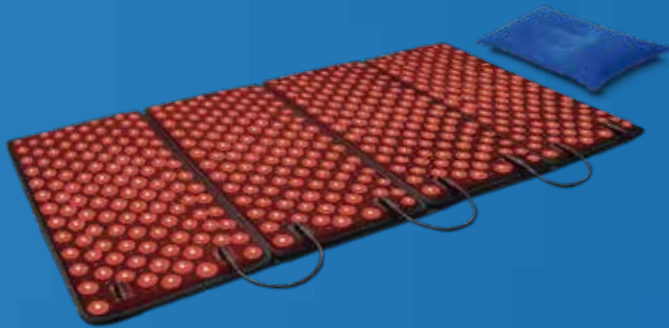


# MANUAL

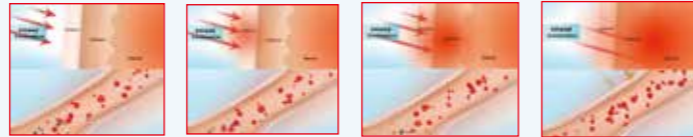


## Introduction

Effective wavelengths of near infrared light therapy include 750 nm to 1,400 nm. The wavelength of the near infrared is more beneficial in treating deep wounds and relieving muscle and joint pain. 850nm and 980 nm are common for near infrared light therapy.

DGYAO adopts 484pcs 880 nm infrared led lights (invisible to naked light) and 484pcs 660 nm red led lights. The combination of red and infrared light increase blood circulation by thermal effect to provide pain relief.

### How does Infrared light work?



The NIR is the shortest wavelength and the most penetrating infrared ray, which can penetrate 5 to 10 mm of the human body tissues. Infrared light can penetrate the skin, directly to the muscles, subcutaneous tissue which helps to accelerate blood circulation, increase metabolism, relieve pain and increase muscle relaxation, resulting in massage effects. Infrared treats the disease at different levels because of mobilize the body's own disease-resistant ability.

## Function

DGYAO Infrared & Red Light Therapy Device Penetrates muscles and joints effectively to improve blood circulation and relieve pain.

### Apply to the following symptoms:

- ★ Spinal Pain
- ★ Neck Pain
- ★ Fibromyalgia
- ★ Bone Breaks
- ★ Torn Meniscus
- ★ Nerve Pain
- ★ Lower Back Pain
- ★ Sciatica
- ★ Ulcers
- ★ Diabetic Wounds
- ★ Non-Healing Wounds
- ★ Post-Surgical Procedures
- ★ Iliotibial band syndrome

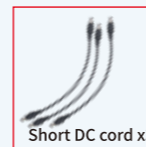
Red & infrared light therapy is considered to be a substance absorbed by the body. Penetrate the tissue! Fill the body with energy. Enhance immunity. Improve the life quality.



- \*Relax of muscle spasms
- \*Promote blood circulation
- \*Natural, non-invasivem and drug free skin rejuvenation
- \*Easily self treatment at home
- \*Relieve back 、 low back 、 shoulder and joint pain and inflammation
- \*Soothes the nervous system
- \*Promotes wound and tissue healing faster
- \*Prevents muscle from soreness & fatigue
- \*Relax & sleep better

## Product description

Infrared light Pad x4



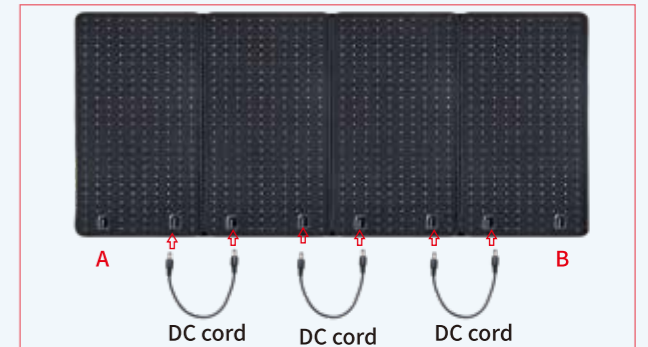
## Connection instructions

### 1.Light therapy pads connection method



The back of the four light therapy pads is assembled with three velcro. Align the two light therapy pads, paste a velcro on the back of the light therapy pad, and paste the four light therapy pads in order.

### 2.Light therapy pads and DC cord connection



DC cord connection. Contains 3 short DC cords and 1 long DC cord. The short DC cord connects two light therapy pads in series, leaving two connecting holes on both sides for connecting the long DC cord.

### 3.DC cord and timer connection

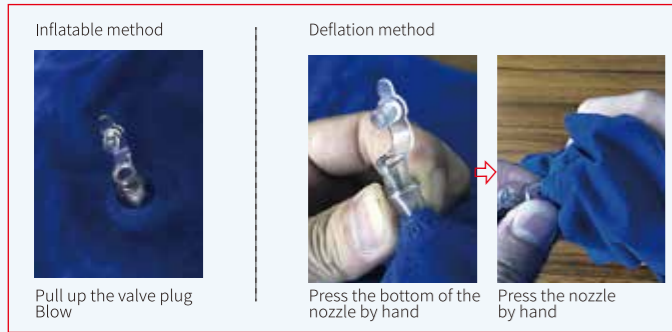


The long DC cord connects to one of the connection and the other end is connected to the OUT1/OUT2 timer.



The timer connects the power adapter.

#### 4. Inflation and deflation



Inflatable pillows need to be inflated before use. Clean the air nozzle, pinch the air nozzle firmly to open the intake valve, and blow air with the mouth. Blow enough air in, release the inflation nozzle, and the valve will automatically close without leaking.

#### Instructions for use

1. Place light therapy pads on a clean and tidy hard surface, connect accessories and power supply, adjust the inflatable pillow. Under head turn on the timer switch to make the light therapy pads work. Lie on the light therapy pads, relax and enjoy red & infrared light therapy.



2. AUTO SHUT-OFF TIMER (20 MINUTES). Do NOT exceed 40 minutes of use in one therapy session.

#### ⚠ Light therapy pads Not foldable.

- ❌ Do not drop heavy objects.
- ❌ Do not use on uneven surfaces.
- ❌ Do not use on soft surfaces.
- ❌ Keep away from water.

4

#### Use instruction right / wrong



wrong

right

#### Clean and storage

##### 1. Clean

Wipe the surface with a damp cloth. Not washable. Do not use alcohol or other corrosive cleaning agents to avoid corroding the surface and damaging internal parts.

##### 2. storage

Please disconnect the light therapy pads from the power supply, when you are not using for a long time. Remove the adapter, timer, and DC cord. Clean light therapy pads for storage. Remove the three velcro tapes on the back, put the four light therapy pads face to face, and put them into the box. Do not fold light therapy pads vertically.

#### Warranty and disclaimer

##### Limited One-Year Warranty

DGYAO carries a limited one-year warranty for the original purchaser against any technical defects. Warranty coverage applies to the original owner and to the original product only and is not transferable.

DGYAO warrants that the device shall be free from defects in material and workmanship for one year from the date of purchase when the device is used and maintained according to the requirements outlined in the User Manual.

If your device stops functioning or working as intended during the one-year warranty period, please call DGYAO Customer Care at Skype +86-139-2922-1675 and one of our customer service team members will work with you to understand the issue and give you instructions on how to get your DGYAO LIGHT THERAPY repaired or replaced, free of charge.

This warranty does not cover normal wear of the device and does not apply to any device that has been tampered with or damaged due to misuse, abuse, or negligent handling.

5

#### Specific Warranty Policy:

- ✓ 1-Year defects liability period
- ✓ 60 days return and replacement warranty
- ✓ 18-month free replacement for charger, controller and connectors. (if they are broken).
- ✓ Return postage beared by customers
- ✓ Return requests as “I don’ t like it”, “I don’ t want it”, ”the color doesn’ t look good” are not accepted.
- ✓ The-less-than-three-light-broke-situation will not covered in the warranty policy because it doesn’ t affect usage effect.
- ✓ keep the original outer package for successful return.

#### Frequently Asked Questions

##### Q1: What should therapy feel like?

A1: You will feel mild warm-up on your body and muscle relax.

##### Q2: How often should I use the pad?

A2: You may apply it for 1-3 times per day, 20 minutes each time. Take a rest and drink some water to relax yourself before next following use.

##### Q3: Does it has both red and infrared lights?

A3: Yes. 484 near infrared light + 484 red light.

##### Q4: How many lights are there on the pad?

A4: 968 lights.

##### Q5: What is the demension of the system?

A5: 23.6” × 44” Therapy area.(4 pieces 23.6”x11” Pad)

##### Q6: How long is the connector strips?

A6: Total 15 ft (4.56 meters).

##### Q7: Does it need to be plugged into the socket?

A7: Yes.

##### Q8: How long will it take to experience relief?

A8: We recommend wearing it for 2-3 therapy sessions per day for the first month. Please be patient because it may take several weeks to experience optimal relief.

##### Q9: Can I use this with pain medications?

A9: Talk to your doctor about your pain medication use in conjunction with our wrap.

##### Q10: Are there side effects?

A10: No. You may experience the skin irritation if you’ re allergic to the fibers.

6

#### Q11: Can people with heart disease or heart pacemaker use it?

A11: No.

#### Q12: What situations should I not use the therapy?

A12: When you suffer high fever, tumour, open tuberculosis, heart disease, acute soft tissue injury.

#### Q13: Can multiple people share the device?

A13: Yes. The device can be used by different people and your pets too if you like.

#### Q14: What’s the wavelenth of the lights?

A14: 660nm in red lights and 880nm in infrared lights.

#### Q15: At what voltage can this device be used?

A15: The device can be used in AC 110-240V or DC 12V

#### Q16: Can I put the device into water for washing?

A16: No.

#### Q17: Can I use a device in bed?

A17: No, this device needs to be placed on a flat and solid surface (such as a floor) to use.

#### Q18: Can I use 5 pads?

A18: Yes, you can combine 1-4 pads at will (For example, 2 pads, 3 pads. if you need to use 5 pieces of pads at the same time, you need to purchase an additional one).

#### Features

Model:	RLT-FB01
Material:	75% styrene butadiene rubber 25% velvet
Effective area:	23.6” × 44” (23.6”x11” 4 pieces)
Power suply:	AC 110-240V /DC 12V
Frequency:	60 Hz
Wavelength:	660nm+880nm
Temperature :	Max 104 °F
N.W:	3.2kg
G.W:	4kg

#### CONTACT US

DONG GUAN TOP YAO INDUSTRY CO.,LTD

- ▶ E m a i l : dgyao@dgyao.net
- ▶ Facebook: @dgyaocn
- ▶ S k y p e : +86 139 2922 1675
- ▶ Amazon Store: <https://www.amazon.com/dgyao>
- ▶ Official Website: <http://www.dgyao.net>

7